



# ENVIRONMENTAL PLANNING & APPROVALS

## CAPABILITY STATEMENT





# Environmental Planning & Approvals

## ABOUT CATCHMENT SOLUTIONS

Catchment Solutions is a Queensland based service provider, offering a range of specialised environmental services that combine technical expertise, innovation and collaboration to meet our client's needs. Working closely with business and government across diverse industries, we provide tailored solutions for strategic environmental and commercial outcomes.

### Our core capabilities are:

- **Water Quality Services**
- **Fisheries and Aquatic Ecosystems Specialists**
- **Agriculture Innovation and Support**
- **Ecosystem Rehabilitation and Repair**
- **Environmental Planning and Approvals**

## STRATEGIC PLANNING

Catchment Solutions offers environmental assessment and planning services including facilitating and generating Development Approval (DA) applications, statutory permit applications, Receiving Environment Monitoring Programs (REMP) and monitoring programs for Ground and Surface water sites.

Our team delivers well informed, stakeholder/ client endorsed plans and approved applications. This includes updating of existing plans, development of frameworks for delivery, stakeholder and community engagement, project coordination and monitoring and evaluation at the implementation phase.

Our team is ideally positioned to advise on environmental planning with strong connections to industry and Government with a clear understanding on how they operate and what statutory requirements are in play.

Catchment Solutions specialises in the development and implementation of environmental management plans with more than a decade of experience and widespread recognition for leading the way in environmental planning.

The Catchment Solutions planning team has a deep and comprehensive understanding of environmental assessment and planning, and is highly experienced in community engagement with multiple interest groups (including industry and government). The team is skilled in capturing a diversity of values, and guiding development of strategic targets to meet the needs of both client and community in achieving well informed and practical environmental solutions.

Catchment Solutions has established strong relationships with its delivery partners and takes an approach that considers all stakeholders in the planning process. Catchment Solutions designs and delivers complex multi-facet projects across diverse platforms, including sustainable agriculture, healthy waterways, aquatic ecology, catchment management, construction and the mining sector.



*IMAGES - Community consultation, information sessions, site inspections, all part of the planning and approvals process*



## PROJECT EXAMPLES

### DTMR Janes Creek Diversion Ecological Survey and Assessment – Northern Access Bruce Highway Mackay

Catchment Solutions undertook the ecological and geomorphological assessment of Janes Creek for the Department of Transport and Main Roads in Mackay. Catchment Solutions led the flora and fauna survey including weed, fish and platypus survey work and undertook an impact assessment for the proposed creek diversion. Catchment Solutions also managed the geomorphological and vegetation assessment of the existing creek conditions.

### Mapping and prioritising of marine fish habitat loss due to tidal exclusion structures – Queensland Department of Agriculture and Fisheries.

Catchment Solutions, in collaboration with key regional stakeholders, undertook a desktop mapping and field assessment of structures that exclude tidal waters and contribute to a loss of marine habitat along the Capricorn Coast of Queensland. Through an expert and community consultation process, in conjunction with a GIS-based analysis (assisted by environmental mapping), sites were given a priority ranking for remediation.

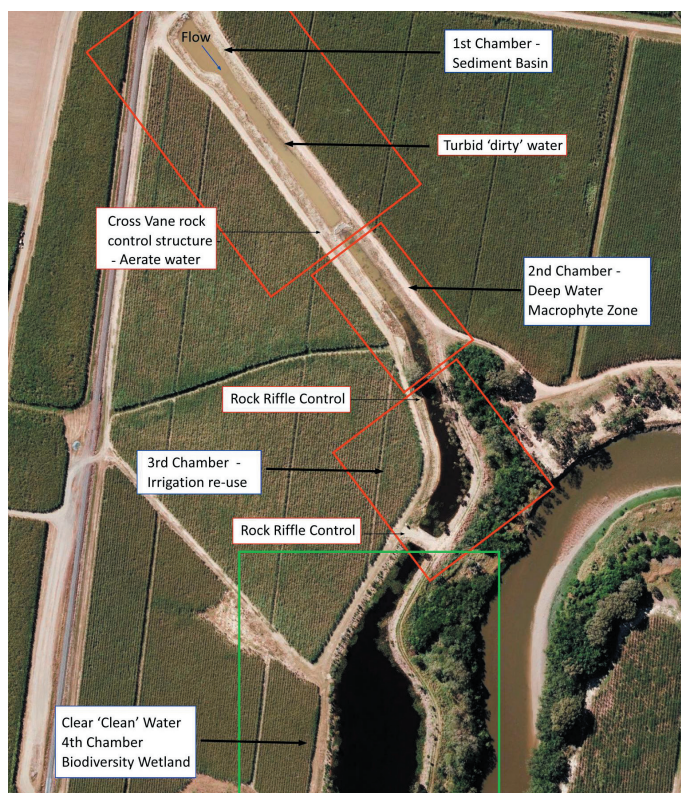
Catchment Solutions has delivered practical options assessments for the rehabilitation of top ranked sites to assist with remediation planning. Specifically, the major undertakings included:

- Creating an inventory of tidal exclusion structures
- Analysing existing spatial data with historic aerial imagery
- Identifying locally-important social, economic, and environmental considerations
- Performing GIS-based analysis to prioritise sites for remediation, and
- Developing an option assessment for the top ranked sites.

### Constant Creek Boat Ramp Carpark Expansion – Planning Support

This project focused on the expansion of the existing public car-trailer parking area within the bounds of the site, including incidental earthworks. It involved researching, preparing and then lodging the development application and guiding the application through the development assessment process. The development needed to consider potential clearing of regulated vegetation, working within the coastal management district and the destruction of marine plants.

The project required site inspections to determine site constraints and surveys of the existing marine plants and vegetation in the area which formed part of the planning assessment report.



High level treatment train design layout

## PRODUCTS & SERVICES

### KNOWLEDGE SYNTHESIS AND REPORTING

- Development of State of Region reports tracking condition and trends of natural assets
- Development of policy and legislation reviews
- Development of specialist issue reviews, including water assessments, aquatic ecology
- Monitoring and evaluation strategy design
- Science communication for general audiences - knowledge transfer

### PUBLIC ENGAGEMENT

- Stakeholder and community engagement planning
- Workshop design and facilitation
- Development of stakeholder appropriate resources including design work
- Analysis and reporting of planning and development outcomes

### PLANNING COORDINATION AND MANAGEMENT

- Review of existing plans and integration of new planning approaches
- Coordination of steering groups and other planning networks
- Project management and reporting
- Planning and Development applications



## Catchment Solutions Pty Ltd

PHONE (07) 4968 4216  
EMAIL [info@catchmentsolutions.com.au](mailto:info@catchmentsolutions.com.au)  
WEB [www.catchmentsolutions.com.au](http://www.catchmentsolutions.com.au)  
ADDRESS Suite 4/85 Gordon Street | Mackay QLD 4740

